

**NEW!**

# OA Knee Wrap

## A Dual Approach to Knee OA

The OA Knee Wrap takes a dual approach to managing symptoms of Osteoarthritis with its two point hinge adjustment for even pressure distribution and its comfortable wrap design that delivers all-around compression to help decrease symptoms of pain and inflammation.

**CODE L1843/L1851 APPROVED**



### Dual Hinge

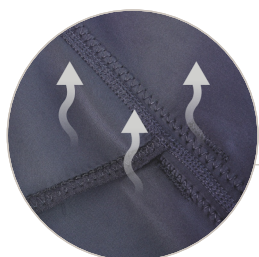
The dual hinge ensures even pressure distribution and allows for flexion/extension stops.





### Two Point Hinge Adjustment

Dual hinge adjustment for even pressure distribution and comfort.



### Breathable Material

Provides compression to reduce swelling and discomfort associated with Osteoarthritis.



### Numbered Hook and Loop Tabs

Outline the proper application sequence to make it easy for patients to don and doff.



### Range of Motion

Adjustable stops allow you to set the range of motion for appropriate treatment during continuum of care.

SIZE	THIGH: 6 in (15 cm) ABOVE MID PATELLA	CALF: 6 in (15 cm) BELOW MID PATELLA
S	15.5-18.5 in (39-47 cm)	12-14 in (30.5-35.5 cm)
M	18.5-21 in (47-53.25 cm)	14-16 in (35.5-40.5 cm)
L	21-23.5 in (53.25-59.5 cm)	16-18 in (40.5-47 cm)
XL	23.5-26.5 in (59.5-67.25 cm)	18-20 in (47-50.75 cm)
XXL	26.5-29.5 in (67.25-75 cm)	20-22 in (50.75-56 cm)

OA Knee Wrap, S (Left)	651021	OA Knee Wrap, S (Right)	651026
OA Knee Wrap, M (Left)	651022	OA Knee Wrap, M (Right)	651027
OA Knee Wrap, L (Left)	651023	OA Knee Wrap, L (Right)	651028
OA Knee Wrap, XL (Left)	651024	OA Knee Wrap, XL (Right)	651029
OA Knee Wrap, XXL (Left)	651025	OA Knee Wrap, XXL (Right)	651030

ACCESSORIES			
Extension/Flexion Stop Frame	651128	Varus/Valgus Adjustment Key	651129
Aspen Knee Suspension Wrap - Code L2397 Approved		651111	



© 2021 Aspen Medical Products, LLC · All rights reserved · 6481 Oak Canyon, Irvine, CA 92618-5202, USA  
800-295-2776 · 949-681-0200 · aspenmp.com · Pat. aspenmp.com/patents · LIT5159B 09/21